


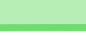


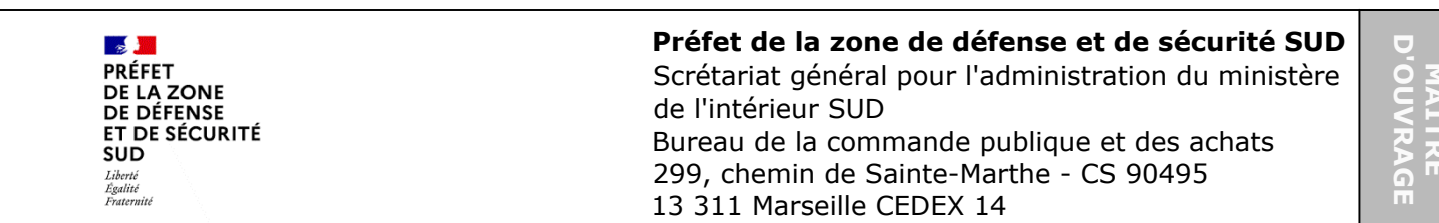
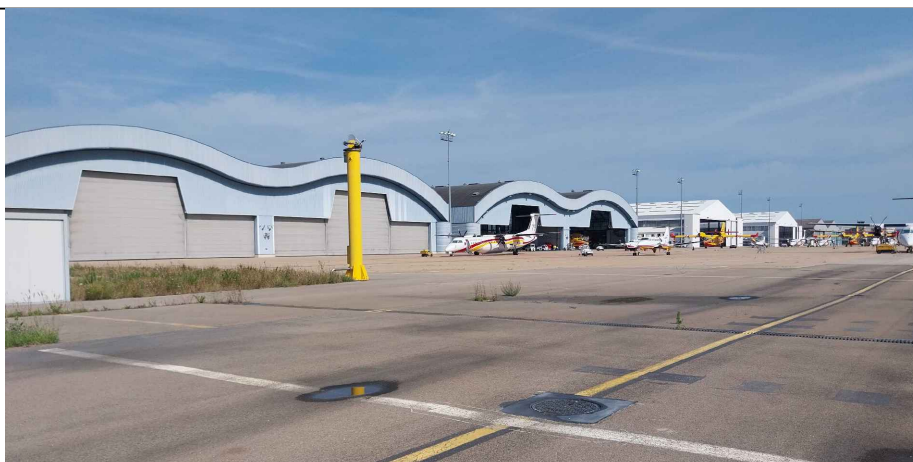
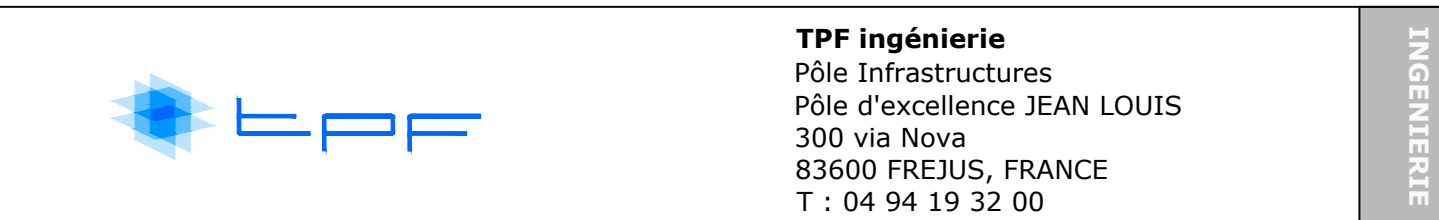


### Légende

- |   |                          |
|---|--------------------------|
|   | Revêtement des dalles TF |
|  | Revêtement des dalles TO |
|  | Revêtement des dalles TO |
|  | Revêtement des dalles TO |
|  | Dalles non goudjonnées   |
|  | Dalles goudjonnées       |



BASE AERIENNE DE LA SECURITE CIVILE - GARONS  
(30)



Vue en plan du découpage TF, TO1, TO2 et TO3.

DATE	INDICE	MODIFICATIONS
30/06/2025	00	Établissement du document

Chemin	Z:\04-AFFAIRES\JNC240026 - NIMES AERO PARKING AVIONS GARON\13-PRO DCE\131-PLAN\DESSINS\JNC240026 - AÉRO - NIMES - PRO-DCE_102_VUE EN PLAN DU DÉCOUPAGE TF, TO1, TO2 ET TO3
--------	--

NUM PROJ	PROJET	PHASE	N° CHRONO	EMETTEUR	TYPE	SPECIALITE	ZONE	INDICE	ECH
INC240026	NIMES	PRO-DCE	102	TPF	VP	TRAN	XX	00	1/50

AGENCE TPFI	ETABLI	VERIFIE	APPROUVE
INC	AA	J.D	L.C.J.

TPF Ingénierie  
www.tpf-i.fr

MEMBER  
EPF

